

# TEST REPORT

(This Report is issued subject to the terms & conditions set out below)

**Setesco Services Pte Ltd**  
18 Teban Gardens Crescent  
Singapore 608925  
Tel : (65) 6566 7777  
Fax: (65) 6566 7718  
www.setesco.com  
Business Reg. No. 196900269D


**Your Ref: -**

**Our Ref: FB-8500130878/SS/2**

**Date: 16/11/2020**

**Page 1 of 3**


- Subject** : Differential pressure test for Face Mask submitted by JSB Tech Pte Ltd on 30/10/2020
- Purpose** : The purpose of the test is to measure the differential pressure of a medical face mask
- Tested For** : **JSB TECH PTE LTD**  
100 Pasir Panjang Road  
#06-02 100 Pasir Panjang  
Singapore 118518  
**Attn: Mr Ong Jia Jia**
- Method of Test** : ASTM F 2100-19 Standard Specification for Performance of Materials Used in Medical Face Masks – Clause 9.2 Determine breathing resistance or differential pressure as directed in EN 14683, Annex C
- Description of Samples** : 20 pieces of eGee-Pro Mask filter were received (Refer to Photograph 1)



Muhammad Shahmil  
Testing Officer



Radin Fadzakir  
Engineer (CMTD)



Salim Suwignjo  
Principal Engineer (CMTD)  
Construction Technology Division

---

**Terms & Conditions:**

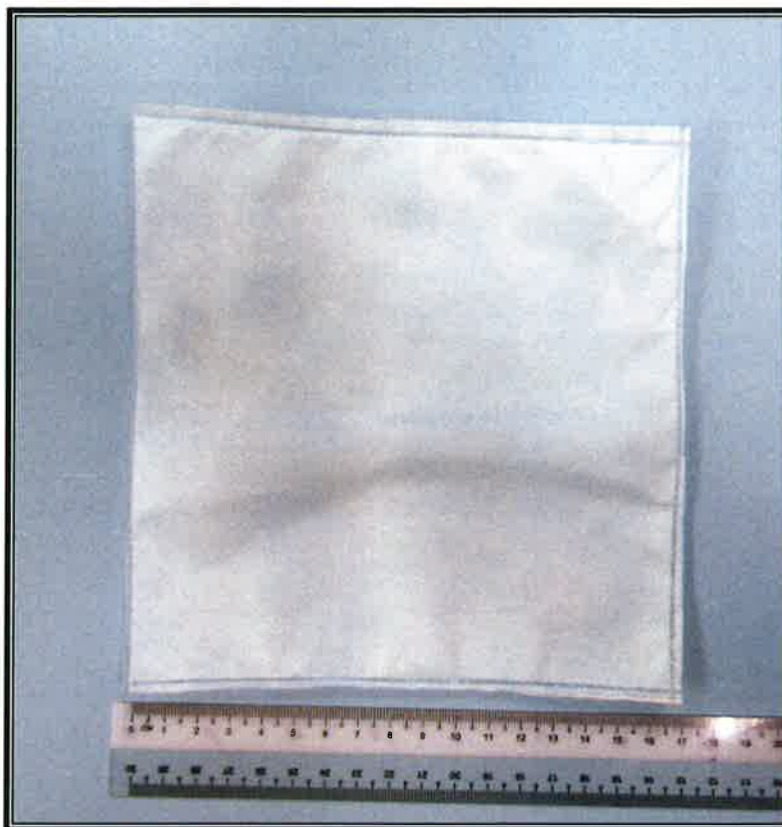
- (1) The Report is prepared for the sole use of the Client and is prepared based upon the Item submitted, the services required by the Client and the conditions under which the Services are performed by SETSCO. The Report is not intended to be representative of similar or equivalent Services on similar or equivalent items. The Report does not constitute an endorsement by SETSCO of the Item.
- (2) SETSCO agrees to use reasonable diligence in the performance of the Services but no warranties are given and done may be implied directly or indirectly relating to the Services, the Report or the facilities of SETSCO.
- (3) SETSCO shall under no circumstances be liable to the Client or its agents, servants or representatives, in contract, tort (including negligence or breach of statutory duty) or otherwise for any direct or indirect loss or damage suffered by the Client, its agents, servants or representative howsoever arising or whether connected with the Services provided by SETSCO herein.
- (4) The Report may not be used in any publicity material without the written consent of SETSCO.
- (5) The Report shall not be reproduced in part or in full unless approval in writing has been given by SETSCO.

Test Result : Differential Pressure

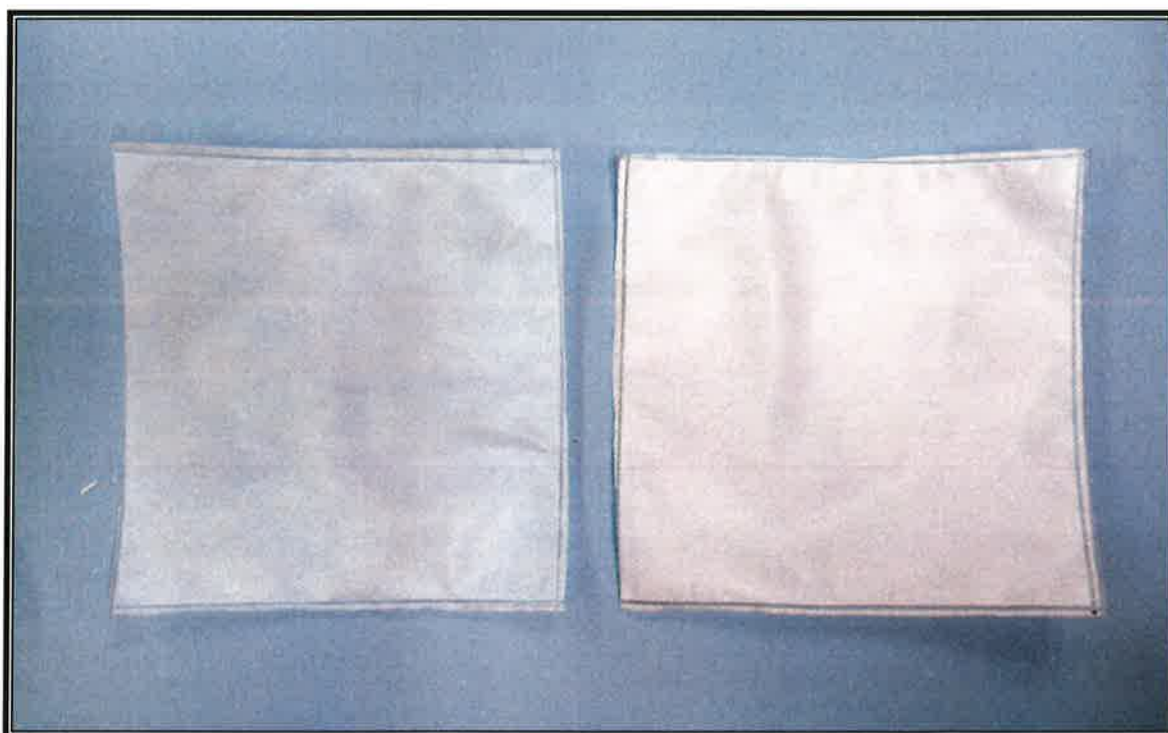
<b>Sample Reference</b>		eGee-Pro Mask filter				
Conditioning		05/11/2020 From 1100hrs to 1500hrs @ 21°C, 85%RH				
Date of Test		05/11/2020				
Test Condition		23°C, 52%RH				
Air Flow	(L/min)	8				
Tested Area	(cm <sup>2</sup> )	4.9				
Type of Mask		Multi Material Mask				
Specimen Reference		S1	S2	S3	S4	S5
Differential Pressure, ΔP (mm H <sub>2</sub> O/cm <sup>2</sup> )	Top 1	4.25	4.29	4.54	4.56	4.29
	Top 2	4.16	4.37	4.58	4.60	4.56
	Top 3	4.06	4.29	4.37	4.66	4.31
	Bottom 1	4.06	4.35	4.52	4.70	4.41
	Bottom 2	4.14	4.29	4.58	4.77	4.49
	Bottom 3	4.18	4.16	4.64	4.68	4.33
	Average	4.14	4.29	4.54	4.66	4.40
<b>Requirement</b> ASTM F 2100 Clause 6 Medical Face Mask Requirements by Performance Level		Differential Pressure, (mm H <sub>2</sub> O/cm <sup>2</sup> ) Level 1 Barrier < 5.0 Level 2 Barrier < 6.0 Level 3 Barrier < 6.0				







Photograph 1 JSB Tech Pte Ltd eGee-Pro Mask filter as received



Photograph 2 JSB Tech Pte Ltd eGee-Pro Mask filter outer (left) and inner (right) surface

*Sh.*

*RP*

*h*